

Aptech's Data Manager Automates Multi-Property Information Gatherings

**Replaces Manual Spreadsheets,
Centralizes Financial Data for Faster Decisions**

June 15, 2006 – Aptech Computer Systems, Inc., a leading hospitality software company, announced an updated release of Data Manager®, its newest solution that provides multi-property chains and management companies with the ability to collect and centralize daily operating data via the web. Data Manager streamlines information gathering from properties with front office and back office systems that do not interface with their chain or corporation financial application. Aptech's other hotel computer systems solutions include Execuvue® business intelligence, Targetvue® enterprise planning and Profitvue® back office accounting.

Melodee Insley, director of financial analysis of Dolce International, said, "One of the most significant challenges we face in data collection is having multiple properties with different back office systems. Aptech's Data Manager gives us the ability to capture information from each of our properties in a format that is easily uploaded to our Execuvue corporate financial system for consolidated performance analysis." Insley explained that prior to installing Data Manager, Dolce used a manual spreadsheet process that required considerable re-keying at the corporate office level.



"Data Manager provides the capabilities of a spreadsheet without the data transfer and storage issues. It lets multi-hotel operators make better management decisions by automating the process of gathering and consolidating daily performance metrics from a wide range of properties," said Cam Troutman, Aptech Computer System's director of sales. "The software fills a communications gap for properties whose systems do not interface to their corporation's financial platform." Data Manager replaces manual flash reports by giving properties the ability to input operating totals from multiple revenue sources, such as rooms, food and beverage and meeting space.

Data Manager employs easy-to-use Web templates to capture each property's daily operating information, regardless of the front office system. The system can then facilitate the transfer of data to the back office system for posting. Interfaces have been written for third-party systems such as J.D. Edwards, Epicor and other non-Aptech applications.

Data Manager's flexibility supports a variety of chain portfolios

Data Manager demonstrated its flexibility recently with one of Aptech's largest clients – an operator with an extensive casino and luxury resort portfolio. "Most companies track between 50 and 150 lines of daily information, but one chain is using 1,500 lines of property data," explained Aptech's Cam Troutman. "Another chain operates a mix of budget and full-service properties. To accommodate the differences, we created separate templates adapted for each property type." Troutman noted that budget properties do not require fields that record F&B totals or meeting rooms, so Aptech simplifies Data Manager screens for their use.

Hotel operators often use spreadsheets for submitting data to a centralized office and generating reports. Though a useful personal productivity tool, spreadsheets are poorly suited for accurate, efficient enterprise planning and performance management and are error prone due to extensive manual data entry.

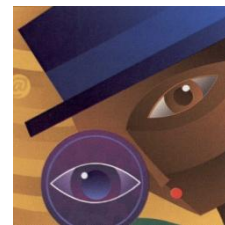
Aptech's Data Manager overcomes the data transfer and storage issues of a spreadsheet. The system gives properties the ability to either manually enter data into a template similar to a "daily flash" spreadsheet, or import data directly into the template from legacy systems such as PMSes. This data is stored in a centralized relational database for reporting and submission to the corporate accounting system.

Data Manager may also be used to capture other types of information like guest satisfaction or time & attendance data. Data can be imported and reviewed at the property level prior to submitting the information to the corporate office, all with a flexible Internet utility.

In addition to Data Manager, Aptech provides the Execuvue business intelligence system. Execuvue is a Cognos-based Internet-enabled enterprise business intelligence application for large and small hotel companies that coordinates data from various corporate systems, including Smith Travel Research, into accessible information with familiar Windows simplicity. Starwood Hotels and Resorts, Concord Hospitality, Innkeepers Hospitality, Ashford Hospitality Trust, Peabody Hotel Group, Dolce International, ZMC Hotels and other successful companies use Execuvue business intelligence.

About Aptech Computer Systems

Aptech Computer Systems, Inc., based in Pittsburgh, Pennsylvania, leads the hospitality industry in leveraging change by valuing human relationships and applying technology to solve business problems for people.



Incorporated in 1970, Aptech is a financial and operations technology solutions and service company whose products include state-of-the-art back office, business intelligence and enterprise planning products: Profitvue, Execuvue and Targetvue. Over 1,100 users, including very large chains, multiple-property management companies and single-site hotels, utilize Aptech solutions to understand their financial and operational data. By offering the hotel industry a solid resource of hospitality professionals, and through its proven ability to evolve technology offerings as the market dictates, Aptech is proud to have earned 100% customer loyalty. Execuvue and Profitvue are registered trademarks and MyExecuvue® is registered to Aptech Computer Systems, Inc. All other trademarks are owned by their respective holders.